

ADMINISTRATIVE PROCEDURES

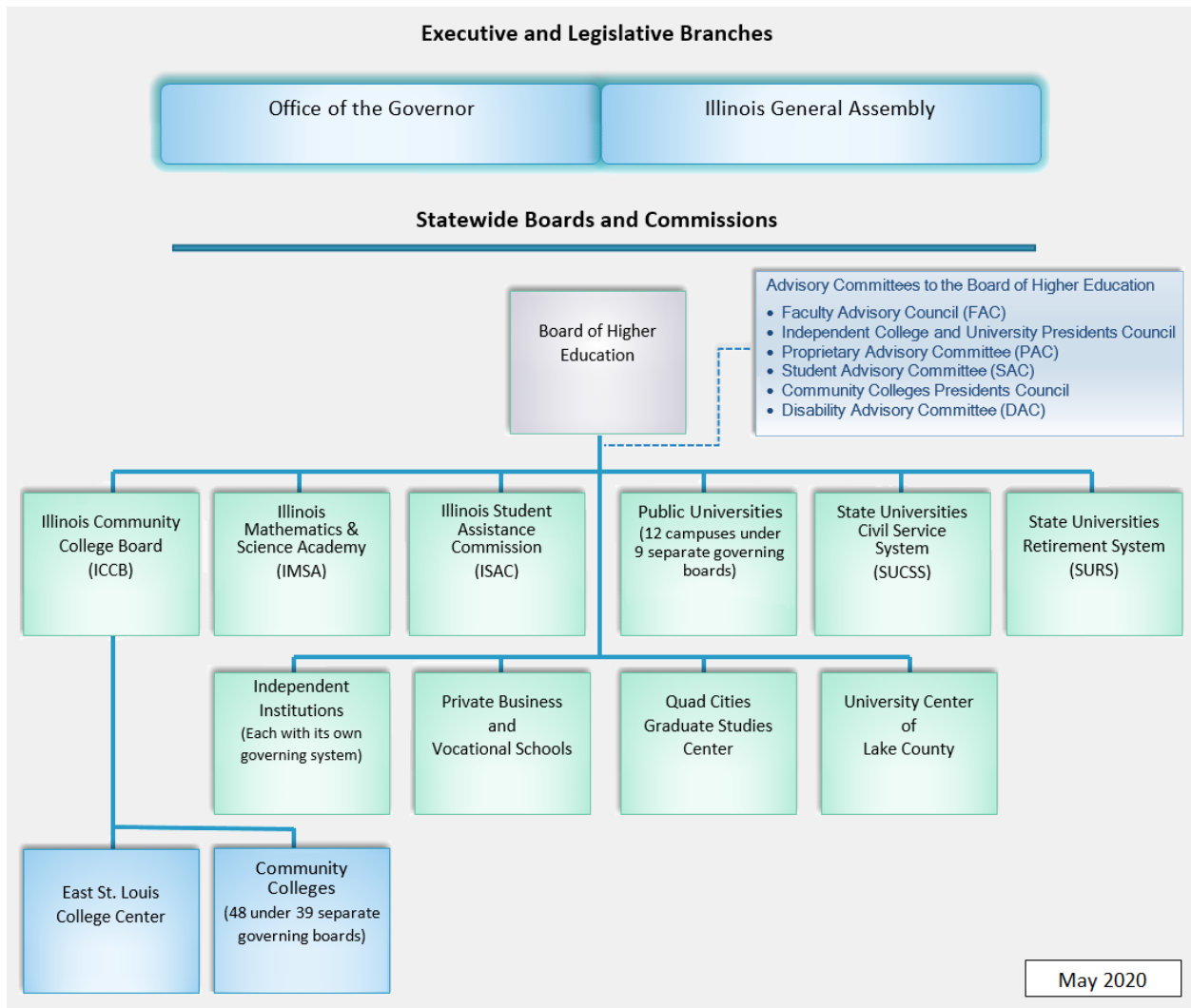
AN APPENDIX TO THE BOARD OF TRUSTEES POLICY MANUAL

College Mission Statement:
To enrich lives through learning and community engagement.

TABLE OF CONTENTS

I. ILLINOIS SYSTEM OF HIGHER EDUCATION

101	Organizational of Higher Education in Illinois
102	Membership of the Illinois Board of Higher Education (IBHE)
103	Membership of the Illinois Community College Board (ICCB)



**ILLINOIS BOARD OF HIGHER EDUCATION
431 E. Adams, Second Floor
Springfield, IL 62701-1481**

Board Members

Pranav G. Kothari - Chair
(Chairman - Public Member)

Veronica Herrero – Vice-Chair
(Vice Chair Public Member)

Andrea Evans
(Public Member)

Jennifer Garrison
(Public Member)

Kenneth Shaw
(Public Member)

Sharon Bush
(Public Member)

Garth Walker
(Public Member)

Vacant
(Public Member)

Sam Majka
(Traditional Student Board Member)

Magnus Noble
(Non-Traditional Student Member)

Sylvia Jenkins
(Ex Officio Member representing the Chair of the Illinois Community College Board)

Eric Zarnikow
(Ex Officio Member representing the Chair of the Illinois Students Assistance Commission)

Dr. Subhash Sharma
(Public University Representative)

Jamel Wright
(Private College and University Representative)



PRESIDENT

August 1, 2024
DATE

ADOPTED: AUGUST 6, 1974
AMENDED: *(UPDATED PERIODICALLY AS NEW APPOINTMENTS OCCUR)*
CROSS REF.: BOARD POLICY 1110

ILLINOIS COMMUNITY COLLEGE BOARD

401 East Capitol Ave.
Springfield, IL 62701-1711

Board Members

Dr. Lazaro Lopez, Chair (June, 2025)
Huffman Estates

Dr. Teresa Garate, Vice-Chair (June, 2025)
Chicago

Maureen Banks (June, 2029)
Champaign

Mara Botman (June, 2029)
Chicago

Craig Bradley (June, 2025)
Karnak

An-Me Chung (June, 2026)
Chicago

George Evans (June, 2027)
Kaskaskia

Dr. Sylvia Jenkins (June, 2027)
Chicago

Marion McClinton (June, 2027)
Chicago

Dr. Larry Peterson (June, 2025)
Goreville

Aubrey Hebenstreit (June, 2025)
Mattoon
(Non-voting student member)

Kirk E. Overstreet, Ph.D.

PRESIDENT

AUGUST 1, 2024

DATE

ADOPTED: April 1, 1980
AMENDED: *(Updated Periodically as New Appointments Occur)*
CROSS REF.: Board Policy 1120