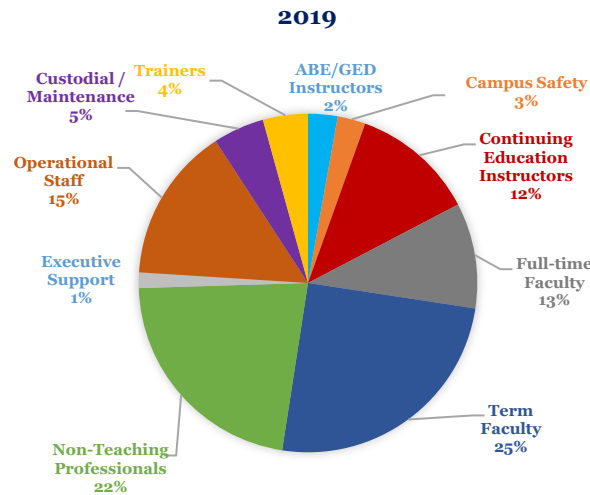


Employees by Job Classification



FY 2020 Budget

The College's FY 2020 budget is just over \$31.6 million.

Revenues – Operating Funds

Tuition & Fees	39.2%
Local Taxes	23.1%
ICCB Equalization Grants	21.4%
ICCB Base Operating Grants	10.3%
CPPRT	1.8%
All other income	4.2%

Expenditures by Program

Instruction	31.7%
Institutional Support	20.5%
Scholarships, Student Grants & Waivers	9.3%
Operation & Maintenance	11.9%
Student Services	8.7%
Academic Support	7.8%
Public Service	3.3%
Transfers	6.8%

Expenditures by Object

Salaries	58.0%
Employee Benefits	6.6%
Contractual Services	6.5%
Materials and Supplies	6.2%
Utilities	2.5%
Conference & Meeting	1.3%
Contingency	0.7%
Capital Outlay	0.7%
Fixed Charges	0.1%
Other	10.6%
Transfers	6.8%

Programs of Study

- Associate in Arts (1)
- Associate in Engineering Science (1)
- Associate in Fine Arts (3)
- Associate in General Studies (1)
- Associate in Science (1)
- Associate in Applied Science (33)
- Certificate of Achievement (19)
- Short-term Certificate of Achievement (12)

Estimated Student Expenses: AY 2019-20

Direct Costs

Tuition	\$3,450.00
Fees	\$316.00
Books and Supplies	\$1,526.00
Total	\$5,292.00

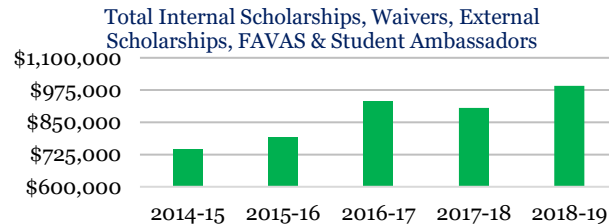
Indirect Costs (Dependent)

Room and Board	\$2,774.00
Transportation	\$3,488.00
Personal Expenses	\$1,622.00
Total	\$7,884.00
Total Direct and Indirect Costs	\$13,176.00

Indirect Costs (Independent)

Room and Board	\$5,528.00
Transportation	\$3,488.00
Personal Expenses	\$1,622.00
Total	\$10,638.00
Total Direct and Indirect Costs	\$15,930.00

John A. Logan College Foundation



John A. Logan College

700 Logan College Road
 Carterville, IL 62918
 (618) 985-3741
www.jalc.edu



John A. Logan College



2019 -
2020

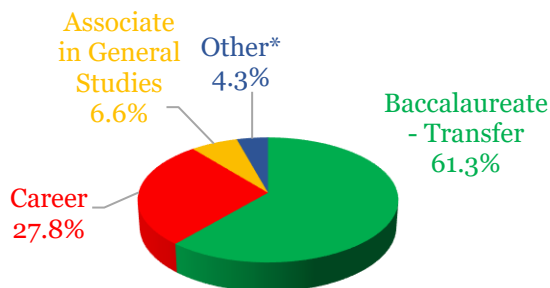
Mission Statement

“We are a diverse learning and teaching community committed to improving individual life and society through high-quality, accessible educational programs and engaged learning opportunities.”

JALC Market Penetration

- For the past three fiscal years John A. Logan College has ranked second among Illinois community colleges in terms of the percentage of the district population aged 16 and older enrolled in a college credit course. In FY 18, the College's market penetration rate for these persons was 11.4 percent. In other words, 11.4 percent of persons aged 16 and older residing in the John A. Logan College district were enrolled in some type of credit course during FY 18. In addition to having the second highest percentage in this regard, the College was also one of only three community colleges in Illinois with a rate of 10.0 percent or higher.

Fall 2019 10th Day Enrollment – 3,744 Breakdown by Area



*Other – Adult Education and Center for Workforce Development

Fall 2019 Credit Student Demographics

Total Enrollment – 3,744

Gender

Male	39.3%	Female	60.7%
------	-------	--------	-------

Age

Age Group	Percentage	Average	Percentage
17 & Under	23.0%	31-40	8.8%
18-20	35.8%	41-50	3.3%
21-25	17.4%	51-60	1.9%
26-30	7.8%	61 & over	1.7%

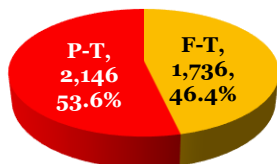
Ethnicity

American Indian / Alaskan Native	0.2%
Asian	0.8%
Black or African American	8.9%
Hispanics of any race	2.1%
Native Hawaiian / Pacific Islander	0.0%
White	76.0%
Unknown	12.0%

Fall 2019 Credit Hour Information

Full-Time Equivalency (FTE) enrollment	2,578
Average number of credit hours enrolled	9.5

Full- vs. Part-time Enrollment



Fall 2019 First-Time to College Students

All First-Time to College	19.8%
Full-Time, First-Time Degree / Certificate-Seeking	14.2%
Part-Time, First-Time Degree / Certificate-Seeking	4.9%

Fall 2019 Distance Education (DE)

Enrolled <u>exclusively</u> in DE courses	9.8%
Enrolled in <u>some</u> but not all DE courses	33.9%
<u>Not enrolled</u> in any DE courses	66.1%

Faculty-to-Student Ratio

Fall 2019 semester	22 to 1
--------------------	---------

Degrees / Certificates Awarded by Level

Level	Count
Associates	501
Certificates of at least 1 but less than 2 years	164
Certificates of less than 1 year	205

Retention, Graduation & Transfer

1-year retention rate for the fall 2017 cohort of full-time, first-time students returning the following fall	51%
Graduation rate for the fall 2015 cohort of full-time, first-time degree-seeking students	30%
Transfer-out rate for the fall 2015 cohort of full-time, first-time students who transferred to another institution	24%

Fall 2019 End-of-Semester Enrollments Adult Education, Center for Workforce Development, and Community Ed

Adult Education	194
Center for Workforce Development	5,610
Community Education	1,378

Student Activities

Over 20 student clubs for a variety of interests; student programming including leadership development, social events and guest speakers; service opportunities such as monthly blood drives, voter registration, and the Angel Tree Gift drive; and performances including plays, musicals, and concerts.

Library Holdings

Physical Collection	49,934
Number of Books	33,287
Magazines and Journals	128
Government Documents	12,402
DVD	656
VHS	874
Pro Quest Central E-Books	3,992
Cloud Library E-Books	35,000+
Miscellaneous E-Resources	1,000+
Streaming Videos – 8 databases - over 20,000 titles.	
Journals, Magazines, Newspaper Articles, Articles from books, Miscellaneous – 30+ databases including thousands of full-text titles.	

Campus

Acreage	169.30
Assigned / Unassigned	67.35 / 101.95
Total number of classrooms / labs	106 / 102

Athletics (Member – NJCAA)

One-hundred and thirteen total athletes (97 on scholarship) compete on seven teams in five different sports.

Baseball	Softball
Basketball (Men & Women)	Volleyball
Golf (Men & Women)	

